

# LLEP Progress and Priorities

Kevin Harris, LLEP Chair  
Mandip Rai, Chief Executive

# LLEP Progress in 2021

# Getting Building Fund: Projects underway



## St. Margaret's Gateway

**£10.5 million allocation** - A regeneration project at one of the key access points to Leicester focused on the rebuilding of St Margaret's Bus Station and refurbishment of the surrounding streets.

## SportPark Pavilion 4

**£6 million allocation** - An ambitious project to complete Loughborough University's SportPark development with a 2,000 m<sup>2</sup> extension.

## M1 junction 23 and A512 improvements

**£1.8 million allocation** - An upgrade of single carriageway road to dual carriageway and the remodelling of five junctions on the A512, along with further improvements to the motorway junction. This is additional funding to accelerate delivery of the next phase following our earlier LGF investment and will create 889 new direct jobs and unlocked a further 2,600 housing units

## Granby Street/St George Street Regeneration Gateway

**£1.7m million allocation** - A project to encourage more people to walk and cycle in Leicester by improving the facilities for sustainable transport.

# European Structural Investment Funds (ESIF) Outputs

- Our £118.5m ESIF programme delivery continues but no further local calls under the ESIF programme were made this financial year. Instead any future funding opportunities were launched nationally as part of the government's Reserve Fund and overall post COVID-19 economic recovery plans.
- In September 2020, the European Social Fund Managing Authority launched a £10m Digital Inclusion Call under the Reserve Fund. This funding was aimed at existing projects only, to help them provide much needed laptops to their clients to help them continue to be supported through remote contact.
- We produced a booklet with an up to date overview of our local ESIF Programme to highlight some of the projects and activities being delivered.
- Through 35 European Regional Development Fund projects that support businesses and 23 European Social Fund projects that support skills development, we have invested £104.5m into the local economy.



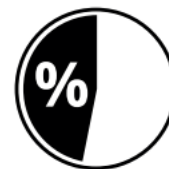
# Local Skills Report

- We published our LLEP Local Skills Report in March 2021. A requirement of all Local Enterprise Partnerships' Skills Advisory Panels (SAPs), our Local Skills Report is a high-level document that sets out the current skills landscape in Leicester and Leicestershire.
- It focuses on where there is need for specific skills in specific sectors and outlines the existing skills strengths of the region that businesses can capitalise on when looking to recruit. A healthy local economy demands a skilled local workforce, and this report outlines how those demands can be fulfilled.
- Strategies include supporting disadvantaged groups to gain qualifications; reskilling existing workers; and working with schools and colleges to ensure young people enter the world of work with the skills required to succeed.

## 4 golden threads



## Focus areas



**45%** of all advertised vacancies in the past twelve months were in Leicester, and **55%** in Leicestershire.



The **top most advertised** roles were: logistics (warehouse) and drivers, health and social care, software and programming, and sales.



The **top most requested** general skill in adverts is communication skills.



The **top three** apprenticeships offered by employers are business administration, engineering and manufacturing, and health and social care.

# Local Growth Fund: Outputs



Leicester & Leicestershire  
Enterprise Partnership

## Leicester North-West Major Transport Scheme (A50/A6) (£1.95m)

Project outcomes:

- New or resurfaced roads – 6.4km;
- New or improved cycleways – 16.2km
- New or improved footways – 4.5km
- Pedestrian crossing facilities – 53
- A marked reduction in accidents.

## Commercial Workspace Pioneer Park (£2.06m)

Project outcomes:

- Creation of new office and commercial workspace – 2453m<sup>2</sup>
- Jobs created or safeguarded – 200
- Private sector leverage – £5m
- Development of graduate-level jobs and links with higher education
- Improved GVA and jobs growth

## Leicester Strategic Flood Risk Management Strategy (£2.02m)

Project outcomes:

- New cycleways – 1.30km
- Homes safeguarded from flooding – 1,852
- Improved footway – 7.8km
- Savings by reducing flood damage – £55m

## National Space Centre Vision 2025 (0.65m)

Project outcomes:

- 37 jobs created or safeguarded
- 30,000 additional family visitors per annum
- 7,200 additional school visitors per annum
- 1050m<sup>2</sup> of refurbished commercial floorspace
- 16,000 students in workshops

## M1 Junction 23 (£7.35m)

Project outcomes:

- New homes – 4,000
- New jobs – 5,700
- New roads – 3.675km
- Widening of the A512 between M1 and the waste transfer site
- 5km of cumulative dualling east and west of J23.

## Space Park Leicester (£3.85m)

Project outcomes:

- 4800m<sup>2</sup> of commercial floorspace;
- 220 jobs
- 14 business start-ups
- four inward investors
- 125 businesses supported.

# Growing Places Fund

## Summary

- The Growing Places Fund (GPF) has provided over £17 million in loans to 11 schemes in Leicester and Leicestershire, with a balance of £6.8m remaining to invest at the end of March 2021.
- In October 2020 the LLEP board agreed to repurpose some GPF funding. A total of £1.6million was made available for economic recovery investment in response to the Covid-19 pandemic

## Investments agreed

- Employment and Skills fund £500k
  - Digital Skills Partnership: £90k
  - Digital Poverty £300k
  - NEET Prevention £100k
  - Business Grants £300k
  - SME Kickstart extension: £500k
  - MIT REAP seed corn delivery £100k
  - Low Carbon delivery £100k

# Business Gateway Growth Hub

## Outputs

- Enabled a swift response to the emerging needs of businesses via the Business Resilience Programme
- Launched the Covid-19 Small Business Recovery Grant attracting 250 applications
- Supported businesses with EU transition advice
- Delivered a diverse range of business support programmes for those sectors severely affected by Covid-19 such as hospitality, tourism, retail, food and drink manufacturing and textiles manufacturing
- Delivered a Start-Up Accelerator programme for business start-ups
- Delivered a digital transformation support programme for businesses

**3,656**

enquiries  
received for  
business  
support - up

**212%**

on the  
previous  
year

**202**

webinars  
delivered  
with

**3,398**

attendees

**£384,000**

Business Gateway  
Growth Grants allocated  
to

**27**

businesses

64

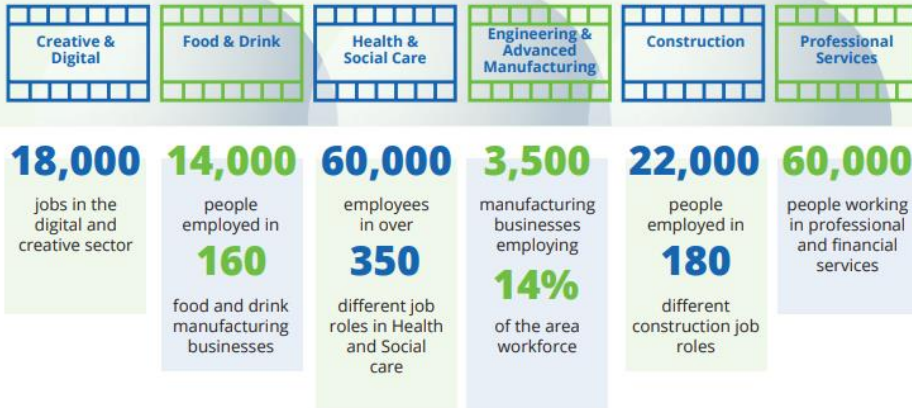


# Careers Hub and Enterprise Adviser Network Outputs

Over 90% of local mainstream schools and colleges are now part of the Enterprise Adviser Network, up from 78% at the beginning of the year.



## Six labour market films highlighting key sectors featuring local employers



During school closures we Launched 'Future Me', a six-week virtual careers programme for young people in years 9-11, with key local employers delivering live online sessions and Q&A on their industry and careers in their sector. Each week was themed on a personal skill such as self-management, creativity and team working.



# Business Tracker Study

- Carried out a survey to monitor the fast-changing business sentiment in response to the Covid-19 pandemic over a period of 12 months.
- The first fieldwork period came to an end in January 2021 with 200 businesses taking part in the survey. The survey collates the views and opinions of local businesses and helped us to understand their needs.
- The focus is on business performance, export and import, environmental issues and issues related to business support.
- The survey will inform future policymaking, and ensure support is appropriately targeted via the Business Gateway Growth Hub.



**More than three in four** have made use of the furlough programme for staff members, 93% of which are small businesses.



**10% of respondents** state that they have accessed no support at all in the form of grants or loans.



**64% of respondents** had staff working from home for the first time. This figure rises to 74% for small businesses.



**30% of businesses** intend to allow greater flexible working options than before.



**Two in three businesses** had no provision for home working before the Covid-19 restrictions hit.



**84% of respondents** wish to some extent to grow digital technology in their business.

# LLEP Board Changes



## **Cllr Danny Myers**

Assistant City Mayor for jobs,  
Skills, Policy Delivery and  
Communications

Leicester City Council

## **Peter Bedford**

County Councillor Representative  
Leicestershire County Council

## **Nishan Canagarajah**

President and Vice Chancellor  
University of Leicester





European Union  
European Structural  
and Investment Funds



Leicester & Leicestershire  
Enterprise Partnership

# Priorities for 2022

# Strategy

## Implementation of the Covid-19 Economic Recovery Action Plan

Throughout this year we will implement the key interventions from the short-term Covid-19 Economic Recovery Action Plan, focused on the priority themes of:

- Business
- People, employment and skills
- Innovation
- Low Carbon
- Infrastructure

## Research

- We will also prioritise three pieces of research which will support and inform our strategy:
- A 12-month Business Tracker Survey to monitor and measure business sentiment over the year
- A Natural Capital Evidence Review which will assess current levels of data, identify gaps and make recommendations to how this can be used as part of policy making
- Sectoral Research into how the economic shock has impacted across the LLEP area's sectoral base, and how this might differ from other areas.

# Governance

Priorities for 2021/2022:

- Review Board membership of existing Governance structures
- Refresh the Local Assurance Framework to reflect changes in governance
- Review our Stakeholder Engagement Plan
- Commence process for election/re-election of Chair of the Board
- Review Directors' terms
- Undertake a Skills Audit among Board members and utilise the findings in Board recruitment and training opportunities

# Getting Building Fund (GBF)

- **£1.7m Granby St/St George St Regeneration Gateway** (Leicester City Council) - improving the facilities for sustainable transport and providing better links across the city centre.
- **£10.5m St Margaret's Gateway** (Leicester City Council) - rebuilding of St Margaret's Bus Station and refurbishment of the surrounding streets as part of a major regeneration scheme.
- **£6m SportPark Pavilion 4** (Loughborough University) - constructing a 2,000m<sup>2</sup> extension to enable the growth of the successful sports cluster at Loughborough University Science & Enterprise Park (LUSEP).
- **£1.8m M1 Junction 23 & A512 Access Improvements** (Leicestershire County Council) - delivering road network improvements to increase capacity and ease congestion enabling the unlocking of land for new homes and employment



# Local Growth and Growing Places

## Local Growth Fund (LGF)

Priority outputs for 2021/22:



Jobs Created/  
Safeguarded



Housing Units

## Growing Places Fund (GPF)

A loan of £4m is supporting the redevelopment of the former Fenwick's department store in Leicester. The loan will be used to convert the former department store into serviced apartments and co-working business space, with associated facilities and four new dynamic commercial units. The building will host nearly 1115m<sup>2</sup> of high-quality office space and be completed by August 2021

Investment of £1.6m of funding to support:

- Employment and skills fund - covering - Digital Poverty - NEET support
- Business Grants
- Place Marketing and promotion
- SME Kickstart extension
- MIT REAP seed corn delivery
- Low Carbon delivery



# Zero Carbon Agenda

## Priorities for 2021/22:

- Zero Carbon Action Plan - agree and implement an overarching Action Plan
- Training – provide training to understand how zero carbon impacts across the LLEP’s work programmes and provide place leadership
- Zero Carbon Focus Group – establish a Focus Group comprising businesses engaged in the sector who will champion the agenda and influence the design of a business support package
- Project Pipeline – work with partners to scope and develop a pipeline of potential low carbon investment projects.

# Enterprise Zones and Business Rates

## Priorities for 2021/2022

### MIRA Technology Park

- Project investment - Commencement - August 2021

### Charnwood Campus

- Medicinal and Synthetic Chemistry Research Centre - Completion - November 2021

### Leicester Waterside

- Place marketing proposal Commencement - April 2021
- Project investment - Commencement - June 2021

### Loughborough University Science and Enterprise Park

- Infrastructure investment - Commencement - December 2021
- Restocking the Building Base Project implementation and first cohort - Underway - April 2021

**Business Rates Pool (BRP)** - £2.4m of funding approved

## Forecast Outputs



Floorspace developed



Jobs created



Floorspace refurbished



New business created



Jobs Created



Area of site  
reclaimed,  
(re)developed  
or assembled



Commercial  
floor space  
constructed  
Gross

# Business Gateway / MITREAP

## Business Gateway Forecast Milestones for 2021/22



## MITREAP Priorities for 2021/22

- Establish an Innovation Board
- Research the innovation support provision
- Launch a dedicated innovation page on the Business Gateway website

# Skills

## Skills Advisory Panel

Priorities for 2021/22

- Recruit two additional private sector members to the SAP to boost employer representation
- Oversee the skills actions in the Covid-19 Economic Recovery Action Plan Matrix
- Appoint a Digital Skills Coordinator who will create a Leicester and Leicestershire Digital Skills partnership and lead on area digital skills research
- Create an area-wide Apprenticeship Strategy
- Develop an area Local Skills Strategy
- Support the development of the Local Skills Improvement Plan
- Continue to provide real-time labour market information.

## Enterprise Advisor Network/ Careers Hub priorities for 2021/22



Minimum number of schools and colleges to be part of the Enterprise Adviser Network August 2021



Increase schools and colleges completing a Gatsby Benchmark audit from 94% to 100% August 2021



Increase the number of Enterprise Advisers from 65 to 85 March 2022



Grow membership of our Cornerstones employer group from 6 to 10 March 2022

# LEP Review



**Strategic function:** (post pandemic recovery, place-based economic expertise and driving Net Zero)

**Local sectors & industries:** identifying interventions to make them more competitive, exploiting place-based opportunities.

**Tailored business support:** joined-up, expert tailored business advice and support for local businesses.

**Existing Projects:** Remainder of LGF, c£500bn in GBF + EZs, Freeports, Town Deals, ESIF/ESF etc.

# 10-year growth projection for Leicester and Leicestershire

2020

GVA:  
£24.5 billion

Jobs:  
538,000

2030

GVA:  
£30.2 billion

Jobs:  
568,000

## PRODUCTIVE

Grow GVA and productivity, continue to develop a leading science and technology-led economy

1. Entrepreneurial, resilient and high growth businesses
2. Attract and grow international business and economic activity
3. Skills for growth
4. World class business locations



## INNOVATIVE

Global innovation leadership, increase innovation activities across the whole business base

1. Global innovation leadership
2. Increase and broaden innovation activity amongst businesses
3. Successfully pioneer and apply emerging and new technologies

## INCLUSIVE

Create a resilient, adaptive workforce where all residents have access to skills and career progression

1. Informed choices and routes to job and skills progression
2. Improve skills and qualifications attainment for all
3. Improve incomes, reduced economic exclusion and poverty



## SUSTAINABLE

A leader in low carbon solutions, with sustainability principles built into everything we do

1. Sustainable places, city and town centres
2. Sustainable transport and connectivity
3. Sustainable energy
4. Sustainable business





# Thanks and Closing Remarks



creating economic prosperity  
**llep**  
Leicester & Leicestershire  
Enterprise Partnership